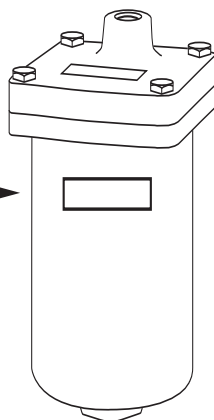


HIGH CAPACITY AIR VENT

High Capacity Air Vent



Warning Label Part No. V56845
installed in this location.
If missing, it must be replaced.

Model 747

DESCRIPTION

The AMTROL Model 747 High Capacity Air Vent is designed for use in liquid systems to purge undesirable free air that otherwise could impede system performance, increase system operating cost and contribute to the damaging effects of corrosion. The accumulation of air in the body of the Model 747 High Capacity Air Vent causes a float to drop allowing the air to be vented through an air eliminating orifice. As the liquid level rises in the vent body, the float also rises shutting off the flow of venting gases.

Temperature and Pressure Limits

Maximum Operating Temperature: 250°F (121°C) Minimum Operating Temperature: 35°F (1.6°C) unless used with liquid other than water.
Maximum Operating Pressure: 150 psig (10.5 bar)

CAUTION The generous use of pipe joint compound when installing 747 High Capacity Air Vent will foul the vent's operating mechanism allowing water to escape. Pipe joint compound must be conservatively applied to male threads only. Failure to follow this instruction can result in personal injury from hot water and/or property damage.

CAUTION The use of Teflon impregnated pipe compound and Teflon tape on pipe threads provides lubricity which can lead to overtightening and breakage. Do not overtighten. Failure to follow this instruction can result in personal injury from hot water and/or property damage.

CAUTION When the vent discharges air or if foreign material from the system fouls the vent's operating mechanism, it is possible for water to also be discharged. Vent must be piped to a drain. Failure to follow this instruction can result in personal injury from hot water and/or property damage.

WARNING Read carefully the AMTROL Model 747 Installation, Operating and Maintenance Instructions Manual to avoid serious personal injury and property hazards and to ensure safe use and proper care of this product.

WARNING Explosion or rupture hazard. The High Capacity Air Vent must be operated so that the pressure does not exceed the maximum operating pressure.

WARNING State of California Residents. This product contains a chemical known by the State of California to cause cancer. This product contains a chemical known by the State of California to cause birth defects or other reproductive harm.

! THIS IS A SAFETY ALERT SYMBOL. IT IS USED TO ALERT YOU TO POTENTIAL PERSONAL INJURY AND OTHER HAZARDS. OBEY ALL SAFETY MESSAGES THAT FOLLOW THIS SYMBOL TO REDUCE THE RISK OF POSSIBLE INJURY AS WELL AS PROPERTY DAMAGE. THIS PRODUCT COMES WITH A LIMITED ONE (1) YEAR WARRANTY, SEE AMTROL'S LIMITED PRODUCT WARRANTY FOR DETAILS.

PLEASE READ THE FOLLOWING INSTRUCTIONS CAREFULLY

WARNING This product must be installed by a qualified plumber.

WARNING This Air Vent, like all pressure vessels, can, over time, corrode, fail, leak and flood. DO NOT LOCATE in an area where water from the air vent can cause property damage.

OPERATING INSTRUCTIONS

CAUTION Liquids and additives such as hydrocarbons, which are aggressive to the EPDM elastomer seals used in the 747 Air Vent, can cause the seals to fail and allow uncontrolled discharge of system fluid. Do not use the 747 Air Vent on systems utilizing such fluids or additives. Failure to follow this instruction can result in personal injury from hot water and/or property damage.

WARNING The model 747 Air Vent will discharge air and possibly some liquid during its normal functioning. Avoid eye, face or skin contact with top area of Air Vent. AMTROL recommends the vent connection be piped to a drain to prevent accidental contact with discharging fluids. Failure to follow this instruction can result in serious personal injury and/or property damage.

SERVICE INSTRUCTIONS

WARNING Corrosion or leakage are indications that the 747 Air Vent may be at the end of its useful life or requires maintenance. It should be periodically inspected and if corrosion or leakage is noted, 747 Air Vent must be replaced or serviced. Failure to follow this instruction can result in serious personal injury and/or property damage.

If model 747 Air Vent does not shutoff after air has been vented off, the seat button may be replaced as follows:

WARNING System fluid under pressure and/or at high temperatures can be very hazardous. Before servicing, reduce system pressure to zero or isolate the 747 Air Vent from the system. Allow system to cool below 100°F. Failure to follow this instruction can result in serious personal injury and/or property damage.

1. Remove the four capscrews that attach the cover to the body. (Item 1, Fig.1)
2. Remove the cover from the body making sure not to damage the gasket surfaces on the cover or the body. (Item 2, Fig. 1)
3. Inspect the rubber button and its mating seating surface for damage or foreign material. (Items 3 & 4, Fig. 1 or 2) If the rubber button is damaged or has deteriorated, the lever and button assembly must be replaced.
4. The spring lever and button assembly is removed by pulling the outer wires of the spring lever out of the holes in the seat yoke. (Items 5 & 8, Fig. 2) (See Fig. 1 Note). Next, remove the spring lever and button assembly from the float by pulling it through the retaining hooks. (Item 6, Fig, 1 or 2).
5. Reverse the procedure in (4) above to install a new lever and button assembly. If the seat yoke has two sets of holes install the lever in the smaller off center holes. (See Figure 3.)
6. Thoroughly clean gasket surfaces and install a new gasket. (Item 7, Fig. 1)
7. Place cover assembly back in place on the body. Replace cap screws and tighten in a criss cross pattern to 20 ft-lbs. of torque.
8. Open any shutoff valves and return the system to normal operation.
9. Check for gasket leaks. Retighten bolts or replace gasket if necessary.

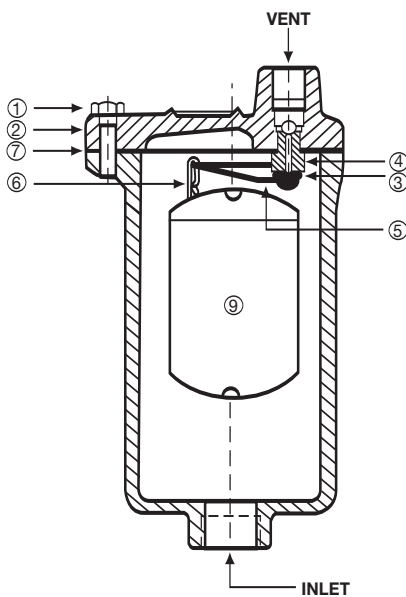


FIG. 1

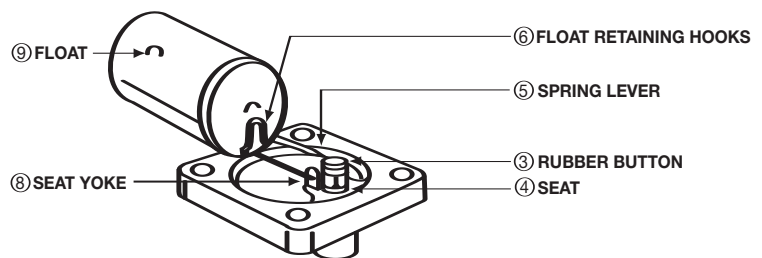


FIG. 2

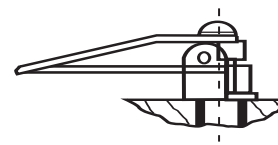
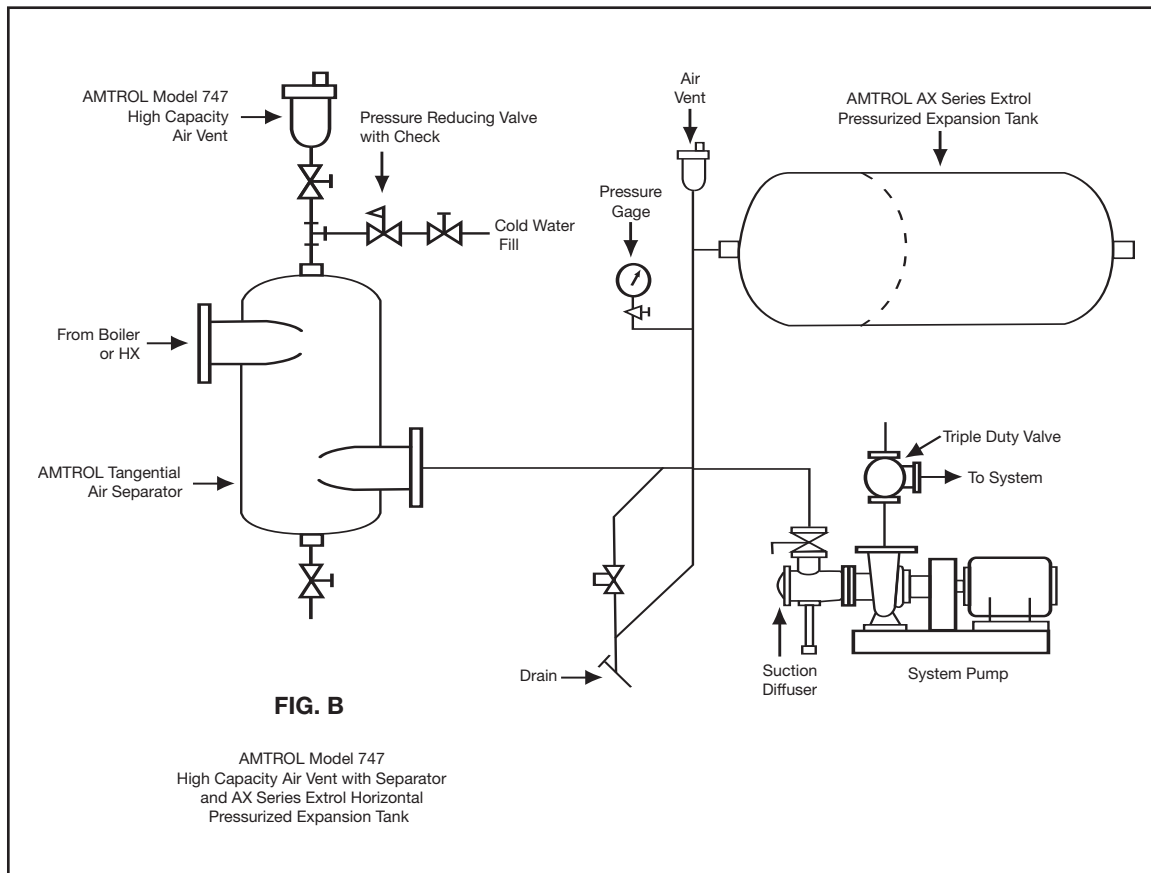
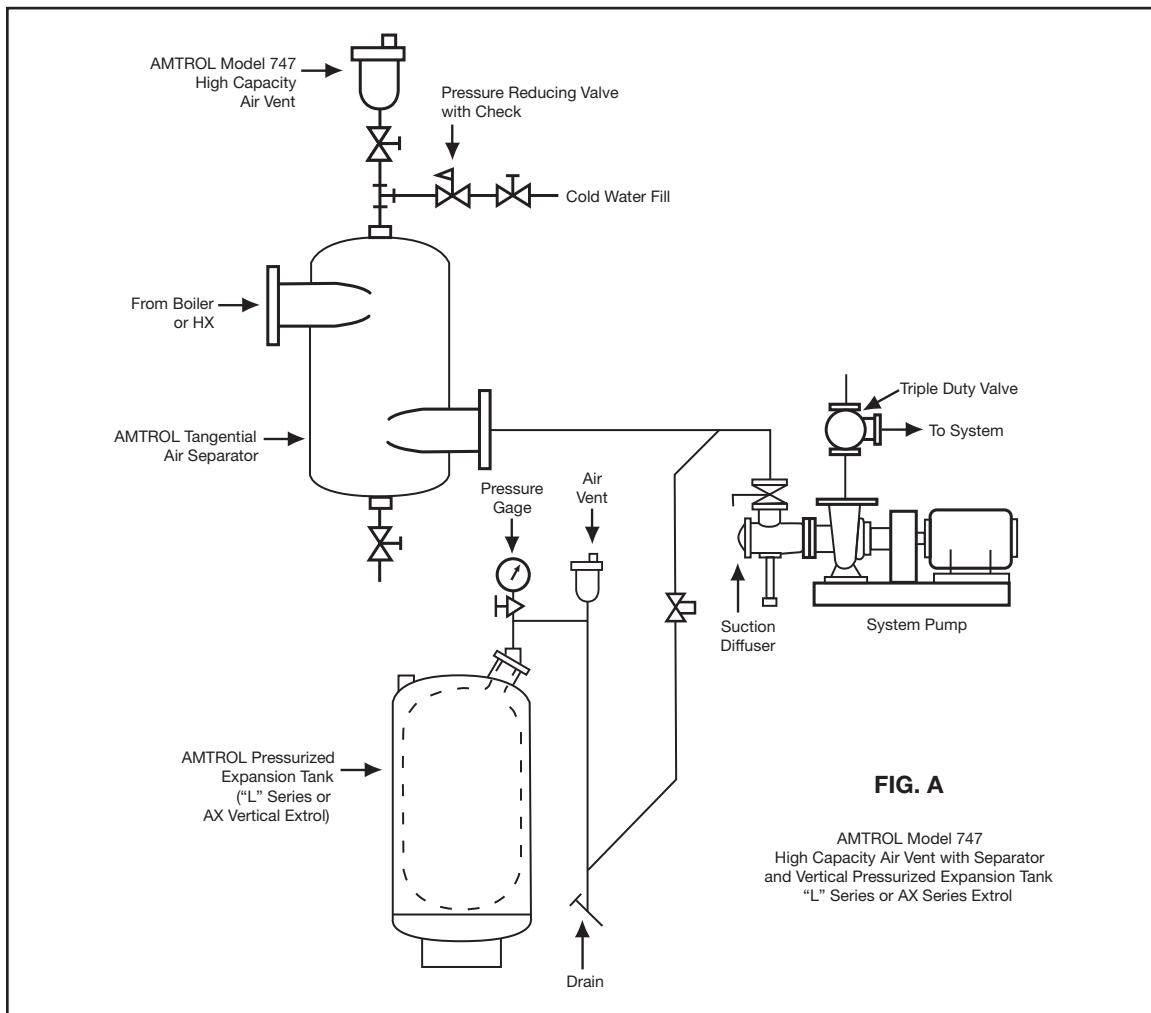


FIG. 3

NOTE: On some air vents, the ends of the spring lever have been welded to produce a restraining bead. To remove these spring levers it is necessary to cut the spring lever. The replacement spring lever will not have these welds and they are necessary only for shipment purposes.

TYPICAL HYDRONIC HEATING/COOLING APPLICATIONS



AMTROL® INC. LIMITED PRODUCT WARRANTY

Products covered: all Products manufactured by AMTROL Inc. ("AMTROL").

This warranty cannot be transferred – it is extended only to the original Purchaser or First User of the Product. By accepting and keeping this Product you agree to all of the warranty terms and limitations of liability described below.

IMPORTANT WARNING – READ CAREFULLY THE INSTALLATION, OPERATING AND MAINTENANCE INSTRUCTIONS MANUAL ("MANUAL") to avoid serious personal injury and/or property damage and to ensure safe use and proper care of this product.

Who Receives AMTROL's Product Warranty

All purchasers or first users of the new Product. The Warranty is non-transferable.

What is covered by this Warranty

AMTROL warrants to the purchaser or first user of the new Product that at the time of manufacture, the Product is free from defects in material and workmanship. **Any warranty claim must be made within one (1) year unless another time period is set forth in the Manual, measured from the time the Product was purchased.**

What AMTROL Will Do If You Have a Covered Warranty Claim

In the event of a breach of the foregoing warranty, AMTROL will at its option either make repairs to correct any defect in material or workmanship or supply and ship either new or used replacement parts or products. AMTROL will not accept any claims for labor or other costs.

What This Warranty Does Not Cover – Exclusions and Limitations

This Warranty does not cover any failure or problem unless it was caused by a defect in material or workmanship. In addition, this Warranty shall not apply:

- if the Product is not correctly installed, operated, repaired or maintained as described in the Manual provided with the Product;
- to any failure or malfunction resulting from abuse (including freezing); improper or negligent: handling, shipping (by anyone other than AMTROL), storage, use, operation, accident; or alteration, lightning, flood or any other environmental condition;
- to any failure or problem resulting from the use of the Product for any purpose other than those specified in the accompanying Manual or alteration of any part of the product;
- if the Product is used anywhere except the United States, its territories or possessions, or Canada;
- this Warranty does not cover labor costs, shipping charges, service charges, delivery expenses, administrative fees or any costs incurred in removing or reinstalling the Product;
- this Warranty does not cover any claims submitted to AMTROL or an AMTROL-authorized distributor or retailer more than 30 days after expiration of the applicable warranty time period described in this Warranty;
- this Warranty also does not cover repair or replacement costs not authorized in advance by AMTROL.

Additional Warranty Limitations

ALL IMPLIED WARRANTIES, INCLUDING THE IMPLIED WARRANTIES OF MERCHANTABILITY AND FITNESS FOR A PARTICULAR PURPOSE ARE SPECIFICALLY DISCLAIMED. Some states do not allow limitations on how long an implied Warranty lasts, so the above limitation may not apply to you.

Limitations of Remedies

THE REMEDIES CONTAINED IN THIS WARRANTY ARE THE PURCHASER'S OR FIRST USER'S EXCLUSIVE REMEDIES. IN NO CIRCUMSTANCES WILL AMTROL BE LIABLE FOR MORE THAN, AND PURCHASER-FIRST USER'S REMEDIES SHALL NOT EXCEED, THE PRICE PAID FOR THE PRODUCT. IN NO CASE SHALL AMTROL BE LIABLE FOR ANY SPECIAL, INDIRECT, INCIDENTAL OR CONSEQUENTIAL DAMAGES, WHETHER RESULTING FROM NONDELIVERY OR FROM THE USE, MISUSE, OR INABILITY TO USE THE PRODUCT OR FROM DEFECTS IN THE PRODUCT OR FROM AMTROL'S OWN NEGLIGENCE OR OTHER TORT. This exclusion applies regardless of whether such damages are sought for breach of warranty, breach of contract, negligence, strict liability, in tort or under any other legal theory. Such damages include, but are not limited to, inconvenience, loss or damage to property, mold, loss of profits, loss of savings or revenue, loss of use of the Products or any associated equipment, facilities, buildings or services, downtime, and the claims of third parties including customers. Some states do not allow the exclusion or the limitation of incidental or consequential damages, so the above limitation or exclusion may not apply to you.

What To Do If You Have a Problem Covered By This Warranty

Any covered Warranty service must be authorized by AMTROL. Contact the person from whom you purchased the Product, who **must** receive authorization from an AMTROL distributor or AMTROL. If you do not receive a prompt response, call AMTROL directly at 877-517-9673. Notice of a Warranty claim should be submitted by the authorized distributor to AMTROL at the following address:

AMTROL Inc.
Warranty Claim Dept.
1400 Division Rd.
West Warwick, RI 02893

Before AMTROL determines to provide any replacement part or Product, it may as a pre-condition to making such a determination require that the warranty claimant ship the Product, postage prepaid to an authorized AMTROL distributor, or to AMTROL and provide proof of purchase evidenced by the original sales receipt or Product registration.

Replacement Product Warranty

In case of replacement of a Product or any component part, AMTROL reserves the right to make changes in the design, construction, or material of the substitute components or products, which shall be subject to all of the terms and limitations of this Warranty, except that the applicable warranty periods shall be reduced by the amount of time the warranty claimant owned the product prior to submitting notification of the warranty claim.