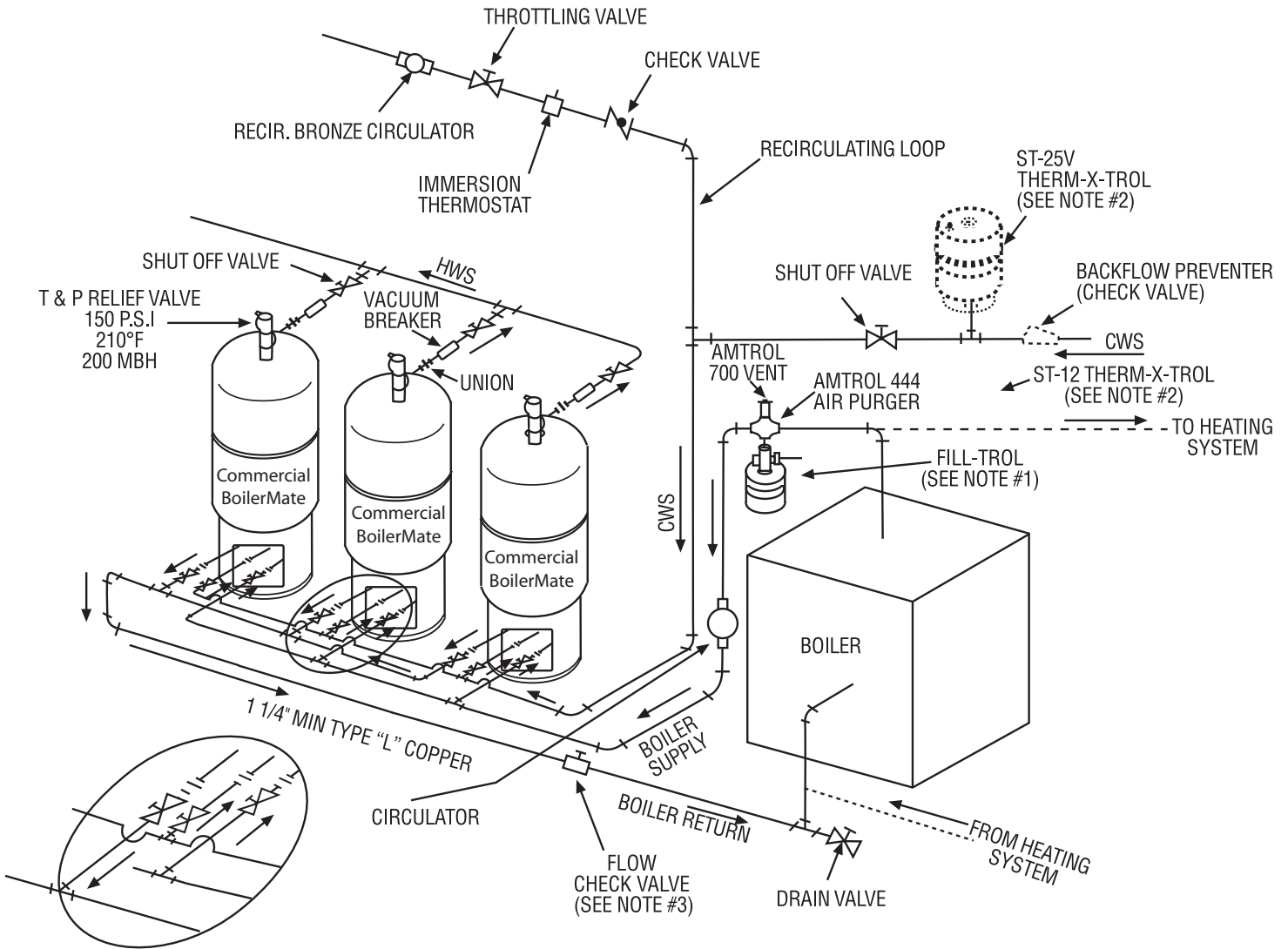


# Recommended Commercial BoilerMate Installation - Three Tanks



**NOTES:**

1. FILL-TROL MUST BE SIZED TO HANDLE A BOILER SYSTEM THE THERMAL EXPANSION. ON LARGE SYSTEMS, AN ADDITIONAL EXTROL MAYBE REQUIRED.
2. THERM-X-TROL IS REQUIRED WHEN THE DOMESTIC WATER SYSTEM HAS A BACKFLOW PREVENTION DEVICE OR CHECK VALVE ON THE INCOMING WATERLINE.
3. REQUIRED WHEN BOILER IS USED FOR BOTH SPACE HEATING AND DOMESTIC HOT WATER, (OR WHEN A FLOW CONTROL IS REQUIRED).