



For Models:

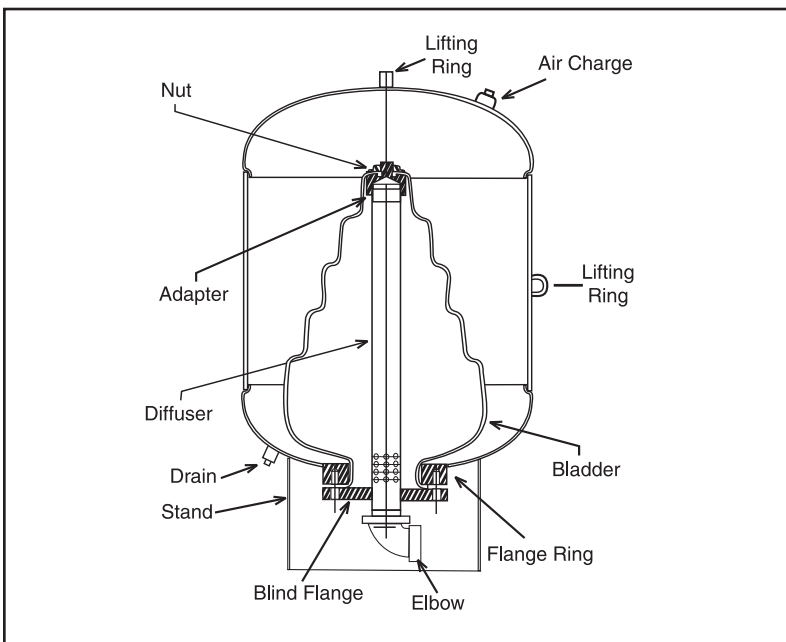
35 LBC	200 LBC
50 LBC	300 LBC
85 LBC	400 LBC
100 LBC	500 LBC
130 LBC	600 LBC
165 LBC	

**STEP-BY-STEP INSTRUCTIONS FOR CHANGING AN LBC SERIES
 EXTROL® BOTTOM CONNECTION BLADDER IN THE FIELD.**

Before proceeding with bladder replacement, read these instructions completely and check the REQUIRED TOOLING & SUPPLIES listing.

⚠ WARNING READ CAREFULLY THE EXTROL® INSTALLATION, OPERATING AND MAINTENANCE INSTRUCTIONS MANUAL TO AVOID SERIOUS PERSONAL INJURY AND PROPERTY HAZARDS AND TO ENSURE SAFE USE AND PROPER CARE OF THIS PRODUCT.

⚠ WARNING EXPLOSION OR RUPTURE HAZARD. THE EXPANSION TANK MUST BE OPERATED SO THAT THE PRESSURE DOES NOT EXCEED THE MAXIMUM WORKING PRESSURE.



REQUIRED TOOLING & SUPPLIES

1. New AMTROL Bladder Kit
2. Plumbers Tool Box
4. Source of Compressed Air (dry air or nitrogen)
4. Power Extension Cord (as required)
5. Chain Block
6. Pressure Gauge & Air Valve Tool
7. Spray Bottle

⚠ WARNING THIS IS A SAFETY ALERT SYMBOL. IT IS USED TO ALERT YOU TO POTENTIAL PERSONAL INJURY AND OTHER HAZARDS. OBEY ALL SAFETY MESSAGES THAT FOLLOW THIS SYMBOL TO REDUCE THE RISK OF POSSIBLE INJURY AS WELL AS PROPERTY DAMAGE.

1. Be sure to have a complete bladder kit (bladder kit consists of blind flange, bladder support pipe and bladder assembly).

2. Isolate tank from system.

3. Drain water from bladder.

WARNING WARNING DO NOT LOCATE THIS PRODUCT WHERE LEAKING OR FLOODING COULD CAUSE DAMAGE TO THE SURROUNDING PROPERTY.

4. Remove air valve core to bleed remaining air charge.

5. Remove drain plug.

WARNING WARNING DO NOT LOCATE THIS PRODUCT WHERE LEAKING OR FLOODING COULD CAUSE DAMAGE TO THE SURROUNDING PROPERTY.

6. Disconnect system connection.

7. Unbolt blind flange from tank and pull out bladder kit from tank.

8. Wash down inside walls of tank as necessary.

9. Mop up remaining water.

10. Dry out inside of tank (reversed vacuum cleaner or air line from compressor).

11. Clean out any remaining dirt.

12. Examine interior of tank for any rust blisters and remove them.

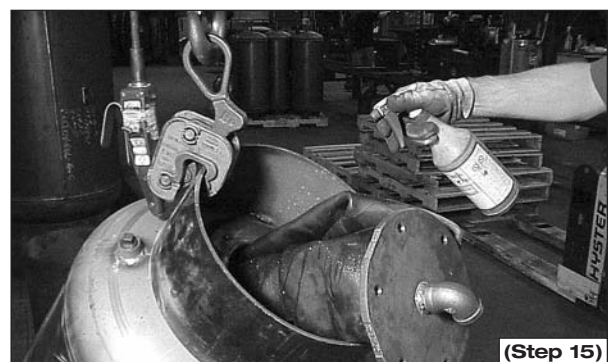
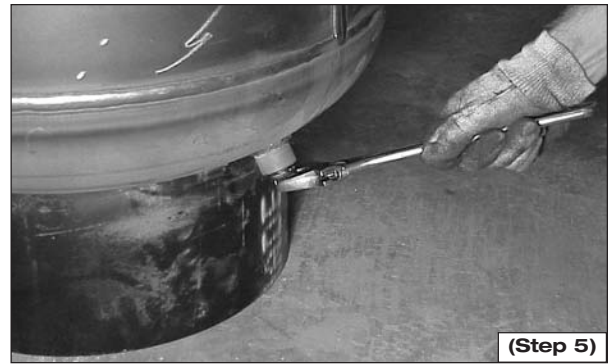
WARNING THIS TANK, LIKE ALL PRESSURIZED TANKS, CAN OVER TIME CORRODE, FAIL, LEAK OR FLOOD. DO NOT LOCATE IN AN AREA WHERE WATER FROM THE TANK CAN CAUSE PROPERTY DAMAGE.

13. Fold new bladder around bladder support pipe.

14. Insert new bladder kit into bottom of tank.

Use existing bolts from tank flange.

15. Using water from spray bottle, lubricate bladder to make it easier to fit through flange opening.



16. Insert bladder neck into bottom of tank.

17. Pull out flange neck of bladder and fit on blind flange.

Bladder neck becomes gasket for flange.

18. Align elbow with whole in skirt to make system connection.

19. Insert bolts by hand into flange and tighten in a cross pattern to 40-50 foot-pounds.

20. Screw in drain plug using a liberal amount of Tite-Seal compound 55 or equal. (This connection must

⚠ WARNING be absolutely air-tight)

FAILURE TO PROPERLY SEAL WILL RESULT IN LOSS OF PRECHARGE CAUSING TANK TO FAIL.

21. Install air valve core. Charge tank to system fill

⚠ WARNING pressure.

DANGER! EXPLOSION HAZARD. IF YOU ADJUST THE PRE-CHARGE PRESSURE OR ADD PRESSURE TO A TANK THAT IS CORRODED OR DAMAGED OR WITH DIMINISHED INTEGRITY THE TANK CAN BURST OR EXPLODE, POSSIBLY CAUSING SERIOUS OR FATAL PERSONAL INJURY AND/OR PROPERTY DAMAGE.

- ONLY ADJUST THE PRE-CHARGE AS DESCRIBED IN THIS MANUAL WHEN THE TANK IS NEW OR WHEN THE INTEGRITY OF THE TANK AND LACK OF INTERNAL OR EXTERNAL CORROSION IS CONFIRMED.

- ONLY QUALIFIED PROFESSIONALS SHOULD CHECK, ADJUST OR RE-CHARGE THE PRE-CHARGE OF TANKS.

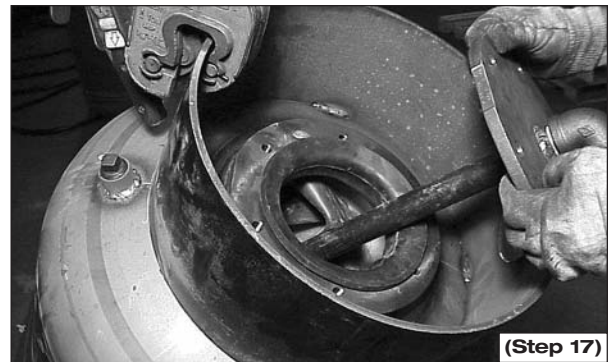
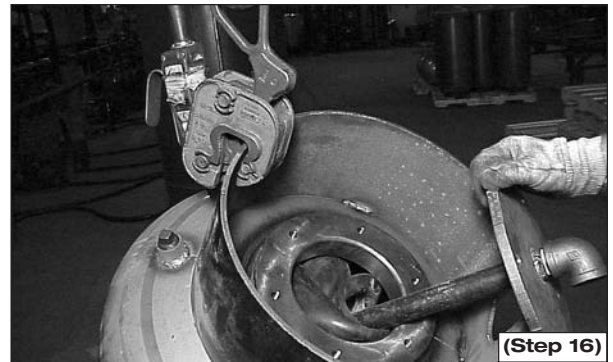
22. Using soapy water, check the drain fitting threads, air core and flange joint for leakage.

23. Connect tank to system*. Open fill-valve and check operation and for any leaks.

*Always pre-charge tank before completing this step.

FAILURE TO FOLLOW THE ABOVE WARNINGS MAY RESULT IN SERIOUS INJURY OR FATAL PERSONAL INJURY AND/OR PROPERTY DAMAGE AND WILL VOID THE WARRANTY.

This product is sold with a 1 year limited warranty. For further details, see AMTROL Limited Product Warranty provided in this manual.



AMTROL® INC. LIMITED PRODUCT WARRANTY

Products covered: all Products manufactured by AMTROL Inc. (“AMTROL”).

This warranty cannot be transferred – it is extended only to the original Purchaser or First User of the Product. By accepting and keeping this Product you agree to all of the warranty terms and limitations of liability described below.

IMPORTANT WARNING – READ CAREFULLY THE INSTALLATION, OPERATING AND MAINTENANCE INSTRUCTIONS MANUAL (“MANUAL”) to avoid serious personal injury and/or property damage and to ensure safe use and proper care of this product.

Who Receives AMTROL’s Product Warranty

All purchasers or first users of the new Product. The Warranty is non-transferable.

What is covered by this Warranty

AMTROL warrants to the purchaser or first user of the new Product that at the time of manufacture, the Product is free from defects in material and workmanship. **Any warranty claim must be made within one (1) year unless another time period is set forth in the Manual, measured from the time the Product was purchased.**

What AMTROL Will Do If You Have a Covered Warranty Claim

In the event of a breach of the foregoing warranty, AMTROL will at its option either make repairs to correct any defect in material or workmanship or supply and ship either new or used replacement parts or products. AMTROL will not accept any claims for labor or other costs.

What This Warranty Does Not Cover — Exclusions and Limitations

This Warranty does not cover any failure or problem unless it was caused by a defect in material or workmanship. In addition, this Warranty shall not apply:

- if the Product is not correctly installed, operated, repaired or maintained as described in the Manual provided with the Product;
- to any failure or malfunction resulting from abuse (including freezing); improper or negligent handling, shipping (by anyone other than AMTROL), storage, use, operation, accident; or alteration, lightning, flood or any other environmental condition;
- to any failure or problem resulting from the use of the Product for any purpose other than those specified in the accompanying Manual or alteration of any part of the product;
- if the Product is used anywhere except the United States, its territories or possessions, or Canada;
- this Warranty does not cover labor costs, shipping charges, service charges, delivery expenses, administrative fees or any costs incurred in removing or reinstalling the Product;
- this Warranty does not cover any claims submitted to AMTROL or an AMTROL-authorized distributor or retailer more than 30 days after expiration of the applicable warranty time period described in this Warranty;
- this Warranty also does not cover repair or replacement costs not authorized in advance by AMTROL.

Additional Warranty Limitations

ALL IMPLIED WARRANTIES, INCLUDING THE IMPLIED WARRANTIES OF MERCHANTABILITY AND FITNESS FOR A PARTICULAR PURPOSE ARE SPECIFICALLY DISCLAIMED. Some states do not allow limitations on how long an implied Warranty lasts, so the above limitation may not apply to you.

Limitations of Remedies

THE REMEDIES CONTAINED IN THIS WARRANTY ARE THE PURCHASER’S OR FIRST USER’S EXCLUSIVE REMEDIES. IN NO CIRCUMSTANCES WILL AMTROL BE LIABLE FOR MORE THAN, AND PURCHASER-FIRST USER’S REMEDIES SHALL NOT EXCEED, THE PRICE PAID FOR THE PRODUCT. IN NO CASE SHALL AMTROL BE LIABLE FOR ANY SPECIAL, INDIRECT, INCIDENTAL OR CONSEQUENTIAL DAMAGES, WHETHER RESULTING FROM NONDELIVERY OR FROM THE USE, MISUSE, OR INABILITY TO USE THE PRODUCT OR FROM DEFECTS IN THE PRODUCT OR FROM AMTROL’S OWN NEGLIGENCE OR OTHER TORT. This exclusion applies regardless of whether such damages are sought for breach of warranty, breach of contract, negligence, strict liability, in tort or under any other legal theory. Such damages include, but are not limited to, inconvenience, loss or damage to property, mold, loss of profits, loss of savings or revenue, loss of use of the Products or any associated equipment, facilities, buildings or services, downtime, and the claims of third parties including customers. Some states do not allow the exclusion or the limitation of incidental or consequential damages, so the above limitation or exclusion may not apply to you.

What To Do If You Have a Problem Covered By This Warranty

Any covered Warranty service must be authorized by AMTROL. Contact the person from whom you purchased the Product, who **must** receive authorization from an AMTROL distributor or AMTROL. If you do not receive a prompt response, call AMTROL directly at 877-517-9673. Notice of a Warranty claim should be submitted by the authorized distributor to AMTROL at the following address:

AMTROL Inc.
Warranty Claim Dept.
1400 Division Rd.
West Warwick, RI 02893

Before AMTROL determines to provide any replacement part or Product, it may as a pre-condition to making such a determination require that the warranty claimant ship the Product, postage prepaid to an authorized AMTROL distributor, or to AMTROL and provide proof of purchase evidenced by the original sales receipt or Product registration.

Replacement Product Warranty

In case of replacement of a Product or any component part, AMTROL reserves the right to make changes in the design, construction, or material of the substitute components or products, which shall be subject to all of the terms and limitations of this Warranty, except that the applicable warranty periods shall be reduced by the amount of time the warranty claimant owned the product prior to submitting notification of the warranty claim.